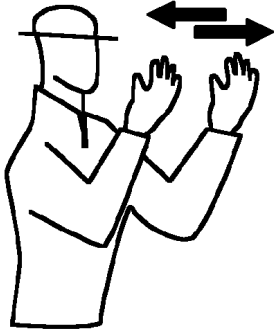


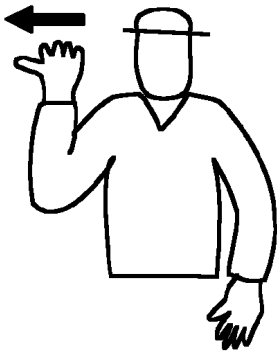
STANDARD BACKING HAND SIGNALS



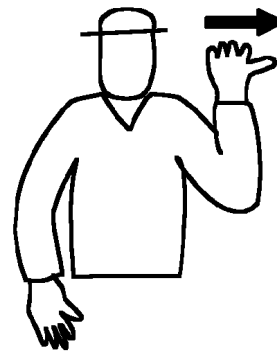
To move vehicle straight back—both hands up, palms toward guide and motion backwards repeatedly.



To stop vehicle—both hands up, palms out and held motionless. In event of an emergency, shout “STOP!”



To direct rear of vehicle right, use right hand only and motion repeatedly.



To direct rear of vehicle left, use left hand only and motion repeatedly.