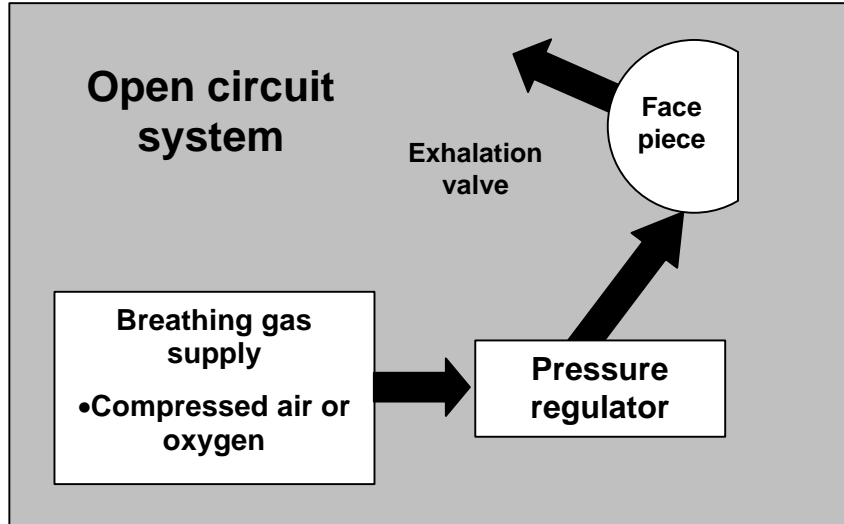
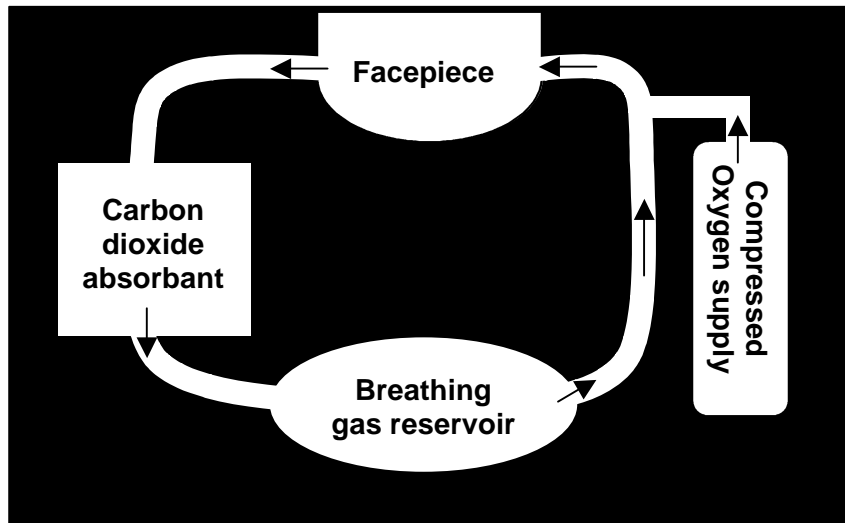


## OPEN CIRCUIT SYSTEM



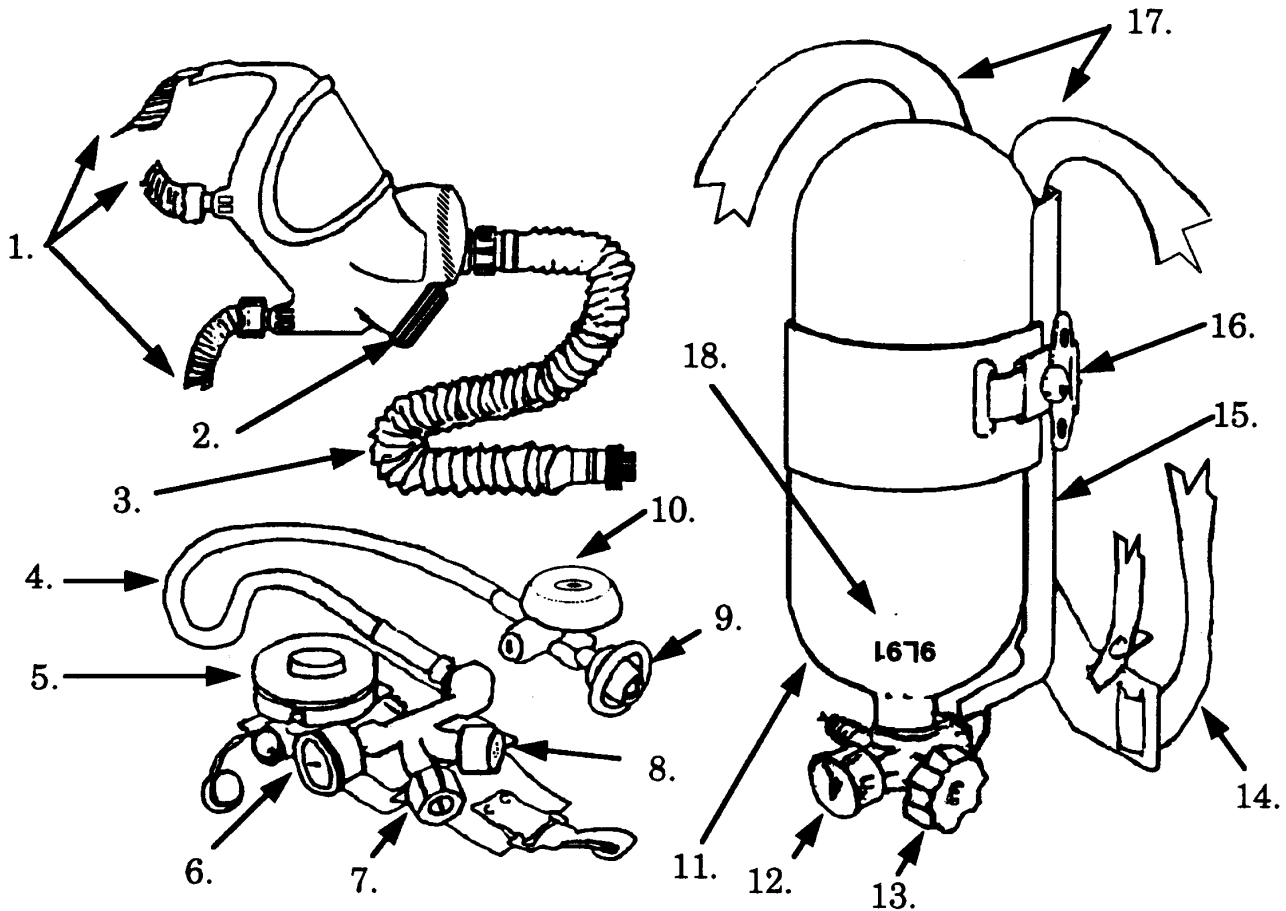
All exhaled air is vented out through the exhalation valve.

## CLOSED CIRCUIT SYSTEM



The closed-circuit apparatus recycles the wearer's exhalation. Carbon dioxide and moisture are removed, and oxygen is added as necessary. Excessive pressure is vented through a relief valve.

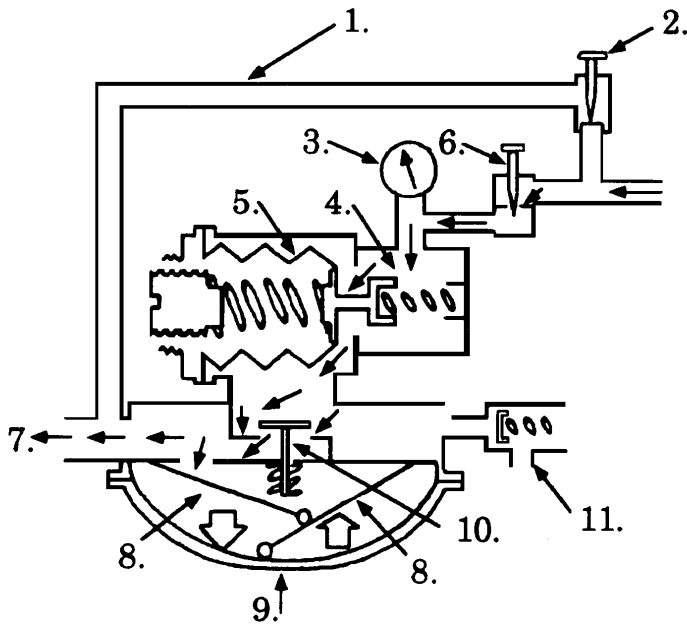
MSA



- 1. Spider strap – head harness
- 2. Exhalation valve
- 3. Breathing or inhalation tube/low pressure hose
- 4. High pressure hose
- 5. Pressure/demand regulator
- 6. Regulator pressure gauge
- 7. Bypass valve
- 8. Mainline valve
- 9. High pressure hose couplin

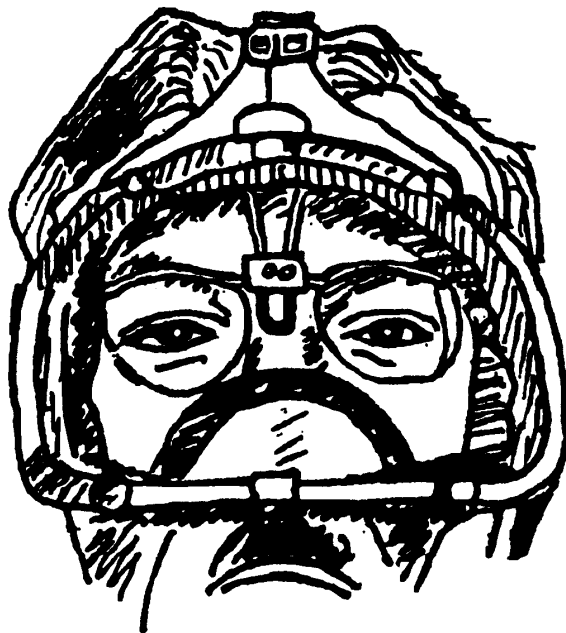
- 10. Low air alarm bell/audi-larm
- 11. Compressed air cylinder
- 12. Cylinder pressure gauge
- 13. Cylinder valve
- 14. Waist strap
- 15. Back plate
- 16. Cylinder clamping lever
- 17. Shoulder straps
- 18. Hydrostatic test date

## REGULATOR



1. Bypass chamber
2. Bypass valve
3. Pressure gauge
4. Pressure-reducing valve
5. Bellows
6. Mainline valve
7. To facepiece
8. Lever
9. Diaphragm
10. Admission valve
11. Pressure relief valve

## EYE WEAR



Special lens mounts are available for firefighters who wear prescription lenses. On Shift,  
Daily, and After Use Inspection & Maintenance Checklist

# Information Sheet #5

## SELF CONTAINED BREATHING APPARATUS (SCBA) TYPES & COMPONENTS

For Self-Contained Breathing Apparatus Ser. No.:

Station: \_\_\_\_\_

Month: \_\_\_\_\_

Date	Time of Inspection	Cylinder Gauge Reading (PSI)	Harness OK	Regulator OK	Facepiece & Low-Pressure Hose OK	Cleaned and Sanitized	Entire Apparatus OK	Inspected By	Inspection after each use		Remarks
									Incident #	Inspected By	
1											
2											
3											
4											
5											
6											
7											
8											
9											
10											
11											
12											
13											
14											
15											
16											
17											
18											
19											
20											
21											
22											
23											
24											
25											
26											
27											
28											
29											
30											
31											